

山口県景気動向指数
INDEXES OF BUSINESS CONDITIONS

— 令和4年11月分 —

令和5年1月

山口県総合企画部

統計分析課

景気動向指数

—令和4年11月分—

目次

| | | |
|----|-----------------|----|
| 1 | C I 先行指数の動向 | 1 |
| 2 | C I 一致指数の動向 | 2 |
| 3 | C I 遅行指数の動向 | 3 |
| 4 | C I 時系列グラフ | 4 |
| 5 | C I 時系列表 | 5 |
| 6 | 個別系列の数値 | 6 |
| 7 | (参考) D I 変化方向表 | 9 |
| 8 | (参考) D I 時系列グラフ | 10 |
| 9 | (参考) D I 時系列表 | 11 |
| 10 | (参考) 累積D I 時系列表 | 12 |
| 11 | (参考) 累積D I グラフ | 13 |

(使用上の注意)

- ・未発表の系列がある月については、現時点で得られる値のみで求めた。

山口県景気動向指数についての問い合わせ先

○山口県総合企画部統計分析課調査分析班

T E L 083-933-2663

F A X 083-933-2669

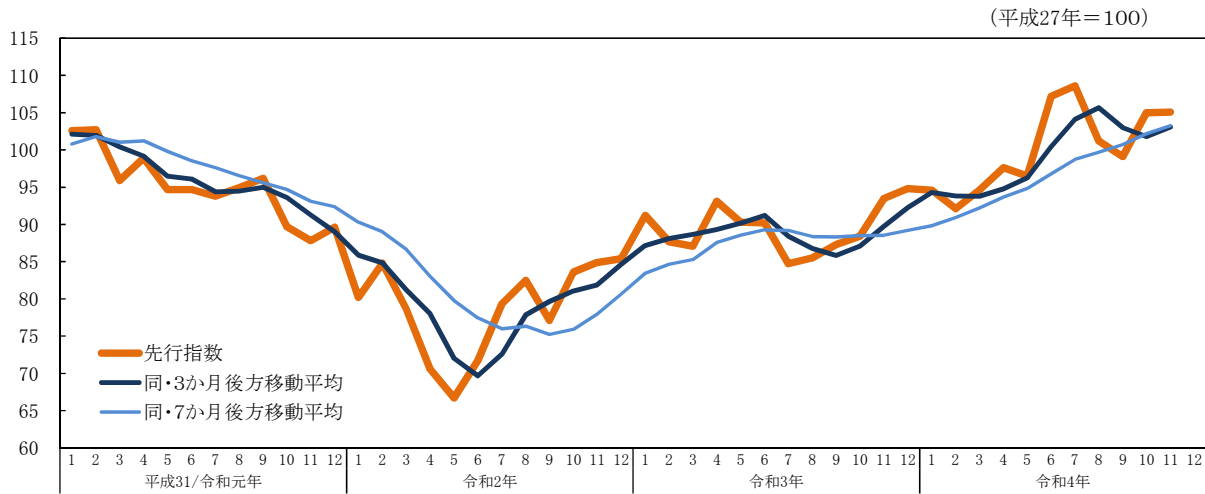
E-mail a12500@pref.yamaguchi.lg.jp

○この資料は、インターネットでもご覧いただけます。

<https://www.pref.yamaguchi.lg.jp/soshiki/22/15277.html>

1 CI先行指数の動向

①先行指数の推移



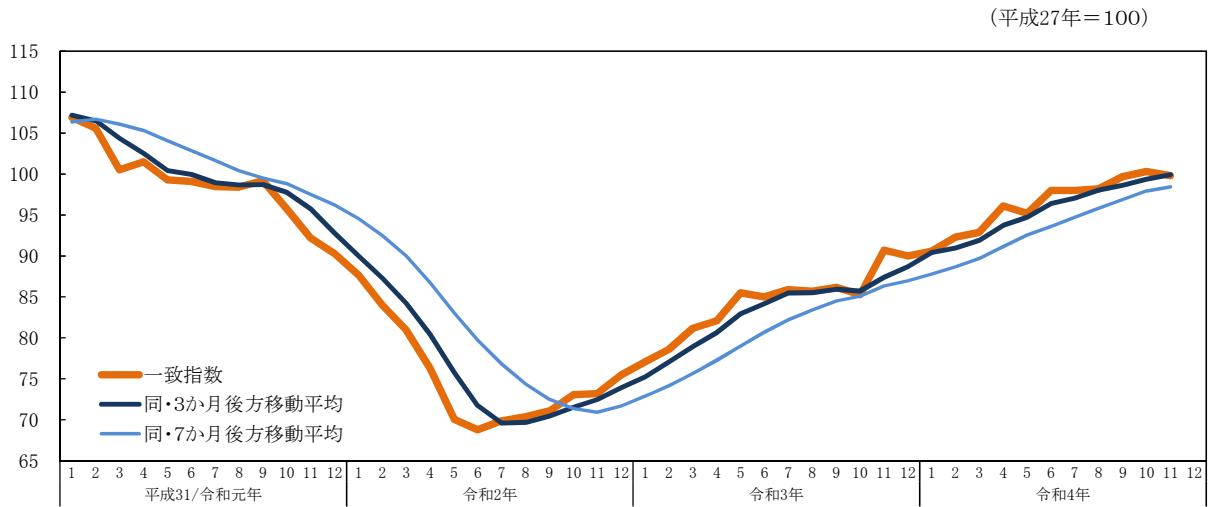
②先行指数採用系列の寄与度

| | | 令和4年 | | | | | |
|--------------------|-------------|-------|-------|-------|-------|-------|-------|
| | | 6月 | 7月 | 8月 | 9月 | 10月 | 11月 |
| CI先行指数 | | 107.2 | 108.6 | 101.2 | 99.1 | 105.0 | 105.1 |
| | 前月差(ポイント) | 10.7 | 1.4 | -7.4 | -2.1 | 5.9 | 0.1 |
| L1 入職率(製造業) | 前月差 | 0.09 | 0.13 | -0.37 | 0.17 | 0.18 | -0.06 |
| | 寄与度 | 0.50 | 0.80 | -2.24 | 0.97 | 1.07 | -0.34 |
| L2 新規求人数(除く学卒) | 前月比伸び率(%) | 3.4 | 2.0 | -7.1 | 5.0 | -2.4 | -1.3 |
| | 寄与度 | 1.08 | 0.66 | -2.41 | 1.53 | -0.78 | -0.43 |
| L3 生産財生産指数 | 前月比伸び率(%) | 3.5 | -3.5 | -7.7 | -5.8 | -2.3 | -0.8 |
| | 寄与度 | 1.78 | -2.02 | -3.36 | -2.98 | -1.03 | -0.25 |
| L4 乗用車新車登録台数 | 前月比伸び率(%) | 9.9 | 4.0 | -3.2 | 6.3 | 17.4 | -4.7 |
| | 寄与度 | 2.95 | 1.22 | -1.09 | 1.78 | 3.19 | -1.69 |
| L5 鉱工業在庫率指数 | 前月差 | -5.1 | -9.8 | 5.3 | 5.3 | -2.1 | 0.3 |
| | 寄与度 (逆サイクル) | 1.34 | 2.64 | -1.28 | -1.19 | 0.59 | -0.02 |
| L6 新設住宅着工床面積 | 前月比伸び率(%) | -22.7 | 7.1 | 9.0 | 1.0 | 8.0 | 5.6 |
| | 寄与度 | -1.66 | 0.46 | 0.58 | 0.07 | 0.49 | 0.31 |
| L7 企業倒産件数 | 前月比伸び率(%) | -75.0 | 200.0 | -33.3 | 250.0 | -42.9 | -50.0 |
| | 寄与度 (逆サイクル) | 3.19 | -3.15 | 1.10 | -3.19 | 1.59 | 1.91 |
| L8 貸出残高(全国銀行、信用金庫) | 前月差 | 0.8 | 0.3 | 0.7 | 0.5 | 0.4 | 0.3 |
| | 寄与度 | 1.20 | 0.51 | 1.03 | 0.68 | 0.55 | 0.41 |
| 一致指数トレンド成分 | 寄与度 | 0.27 | 0.27 | 0.30 | 0.19 | 0.26 | 0.23 |
| 3か月後方移動平均 | | 100.4 | 104.1 | 105.7 | 103.0 | 101.8 | 103.1 |
| | 前月差(ポイント) | 4.20 | 3.67 | 1.57 | -2.70 | -1.20 | 1.30 |
| 7か月後方移動平均 | | 96.8 | 98.7 | 99.7 | 100.7 | 102.2 | 103.2 |
| | 前月差(ポイント) | 1.96 | 1.97 | 0.94 | 1.00 | 1.49 | 1.07 |

(注) 逆サイクルとは、指数の上昇、下降が景気の動きと反対になることをいう。「L5 鉱工業在庫率指数」及び「L7 企業倒産件数」は逆サイクルとなっており、したがって、指数の前月差がプラスになれば、CI先行指数に対する寄与度のマイナス要因となり、逆に前月差がマイナスになれば、プラス要因になる。

2 CI一致指数の動向

①一致指数の推移



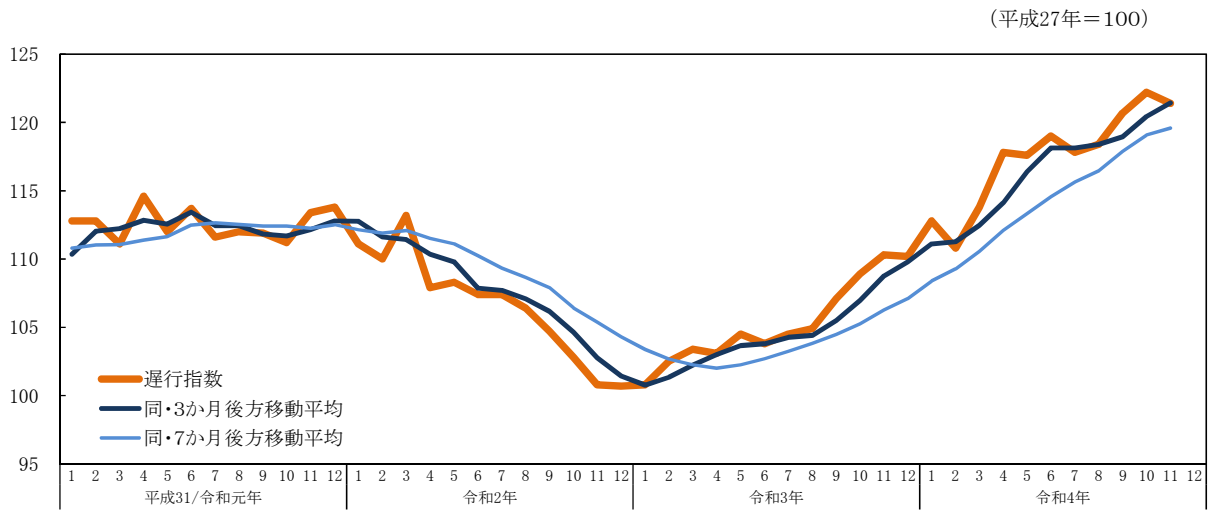
②一致指数採用系列の寄与度

| | | 令和4年 | | | | | |
|-------------------|-------------|-------|-------|-------|-------|-------|-------|
| | | 6月 | 7月 | 8月 | 9月 | 10月 | 11月 |
| CI一致指数 | | 98.0 | 98.0 | 98.2 | 99.7 | 100.3 | 99.8 |
| | 前月差(ポイント) | 2.8 | 0.0 | 0.2 | 1.5 | 0.6 | -0.5 |
| C1 所定外労働時間指数(製造業) | 前月比伸び率(%) | 6.3 | 10.2 | -5.4 | 2.2 | 2.7 | -5.8 |
| | 寄与度 | 1.22 | 1.88 | -1.13 | 0.45 | 0.54 | -1.23 |
| C2 雇用保険受給者実人員 | 前月比伸び率(%) | 3.3 | 4.5 | 2.5 | -6.1 | -1.9 | -3.3 |
| | 寄与度 (逆サイクル) | -1.18 | -1.58 | -0.87 | 1.92 | 0.75 | 1.25 |
| C3 有効求人倍率(除く学卒) | 前月差 | 0.01 | 0.05 | 0.03 | 0.07 | -0.05 | 0.02 |
| | 寄与度 | 0.35 | 1.74 | 1.24 | 1.68 | -2.09 | 0.77 |
| C4 鉱工業生産指数 | 前月比伸び率(%) | 18.6 | -4.9 | -3.1 | -5.5 | 2.0 | -4.3 |
| | 寄与度 | 1.83 | -1.31 | -0.83 | -1.50 | 0.52 | -1.16 |
| C5 輸入通関実績 | 前月比伸び率(%) | 6.0 | -11.9 | 25.5 | -15.2 | 11.7 | -4.2 |
| | 寄与度 | 0.57 | -0.76 | 1.81 | -1.06 | 0.96 | -0.15 |
| 3か月後方移動平均 | | 96.4 | 97.1 | 98.1 | 98.6 | 99.4 | 99.9 |
| 前月差(ポイント) | | 1.70 | 0.63 | 1.00 | 0.57 | 0.77 | 0.53 |
| 7か月後方移動平均 | | 93.6 | 94.7 | 95.8 | 96.9 | 97.9 | 98.5 |
| 前月差(ポイント) | | 1.04 | 1.14 | 1.09 | 1.06 | 1.06 | 0.53 |

(注) 逆サイクルとは、指数の上昇、下降が景気の動きと反対になることをいう。「C2 雇用保険受給者実人員」は逆サイクルとなっており、したがって、指数の前月差がプラスになれば、CI一致指数に対する寄与度のマイナス要因となり、逆に前月差がマイナスになれば、プラス要因になる。

3 CI遅行指数の動向

①遅行指数の推移

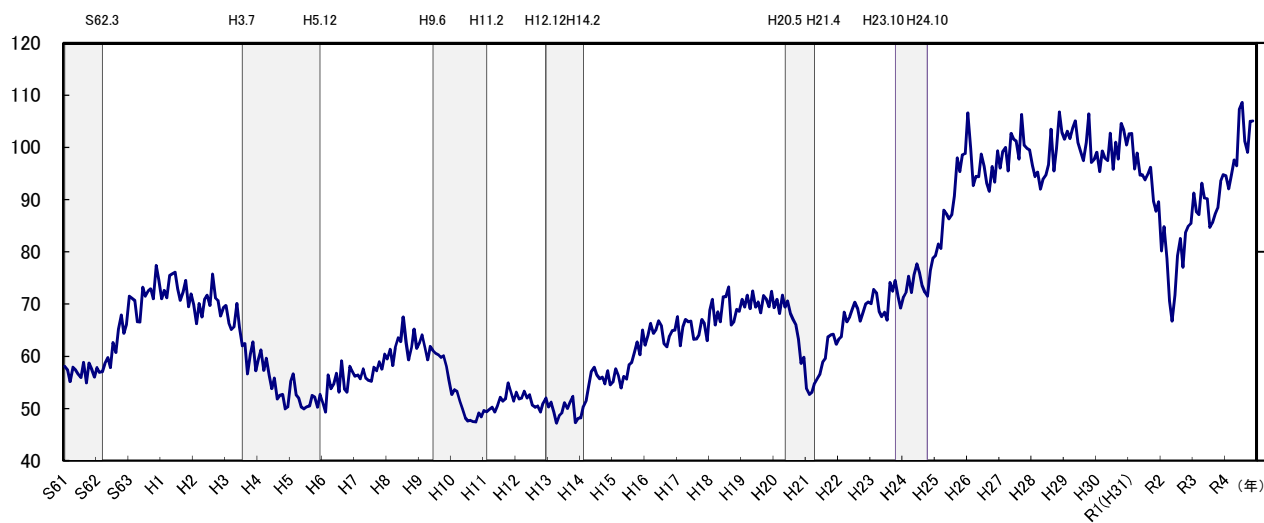


②遅行指数採用系列の寄与度

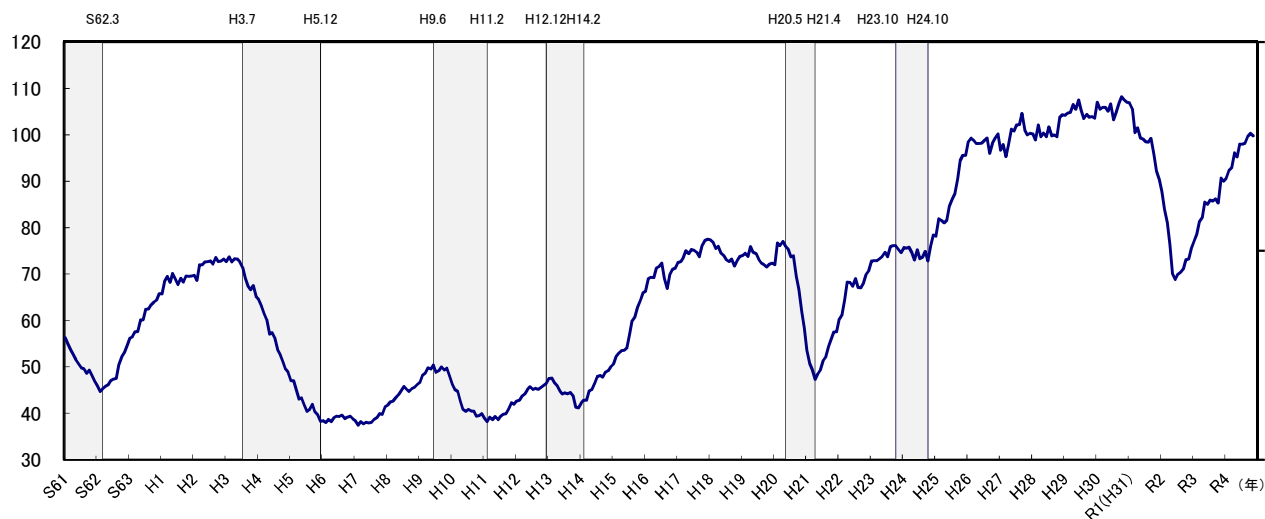
| | | 令和4年 | | | | | |
|--------------------------|-----------|-------|-------|-------|-------|-------|-------|
| | | 6月 | 7月 | 8月 | 9月 | 10月 | 11月 |
| CI遅行指数 | | 119.0 | 117.8 | 118.4 | 120.7 | 122.2 | 121.4 |
| | 前月差(ポイント) | 1.4 | -1.2 | 0.6 | 2.3 | 1.5 | -0.8 |
| LG1 常用雇用指数(製造業) | 前月差 | -0.1 | 0.4 | -0.1 | 0.2 | 0.0 | 0.4 |
| | 寄与度 | -0.13 | 0.56 | -0.13 | 0.30 | 0.03 | 0.71 |
| LG2 賃金指数(所定内給与、製造業) | 前月差 | 1.3 | -1.3 | 0.7 | 1.2 | 0.9 | -1.1 |
| | 寄与度 | 0.66 | -0.68 | 0.35 | 0.61 | 0.55 | -0.72 |
| LG3 消費者物価指数(山口市) | 前月差 | 0.2 | 0.1 | 0.3 | 0.0 | 0.9 | -0.2 |
| | 寄与度 | 0.19 | 0.08 | 0.32 | -0.05 | 1.27 | -0.37 |
| LG4 家計消費支出 (勤労者世帯、実質) | 前月比伸び率(%) | -16.4 | 10.1 | -10.7 | 24.1 | -7.1 | 7.3 |
| | 寄与度 | -1.00 | 0.56 | -0.64 | 1.20 | -0.52 | 0.47 |
| LG5 鉱工業在庫指数 | 前月比伸び率(%) | 4.9 | -5.4 | 0.4 | 0.1 | -0.4 | -3.6 |
| | 寄与度 | 1.10 | -1.35 | 0.04 | -0.03 | -0.14 | -1.08 |
| LG6 営業倉庫保管残高 | 前月比伸び率(%) | 1.3 | -3.0 | 1.8 | 0.0 | | |
| | 寄与度 | 0.22 | -0.64 | 0.32 | -0.03 | | |
| 一致指数トレンド成分 | 寄与度 | 0.31 | 0.30 | 0.34 | 0.22 | 0.31 | 0.27 |
| 3か月後方移動平均 | | 118.1 | 118.1 | 118.4 | 119.0 | 120.4 | 121.4 |
| 前月差(ポイント) | | 1.73 | 0.00 | 0.27 | 0.57 | 1.47 | 1.00 |
| 7か月後方移動平均 | | 114.6 | 115.7 | 116.5 | 117.9 | 119.1 | 119.6 |
| 前月差(ポイント) | | 1.24 | 1.09 | 0.80 | 1.41 | 1.20 | 0.51 |

4 CI(コンポジット・インデックス)時系列グラフ Composite Indexes

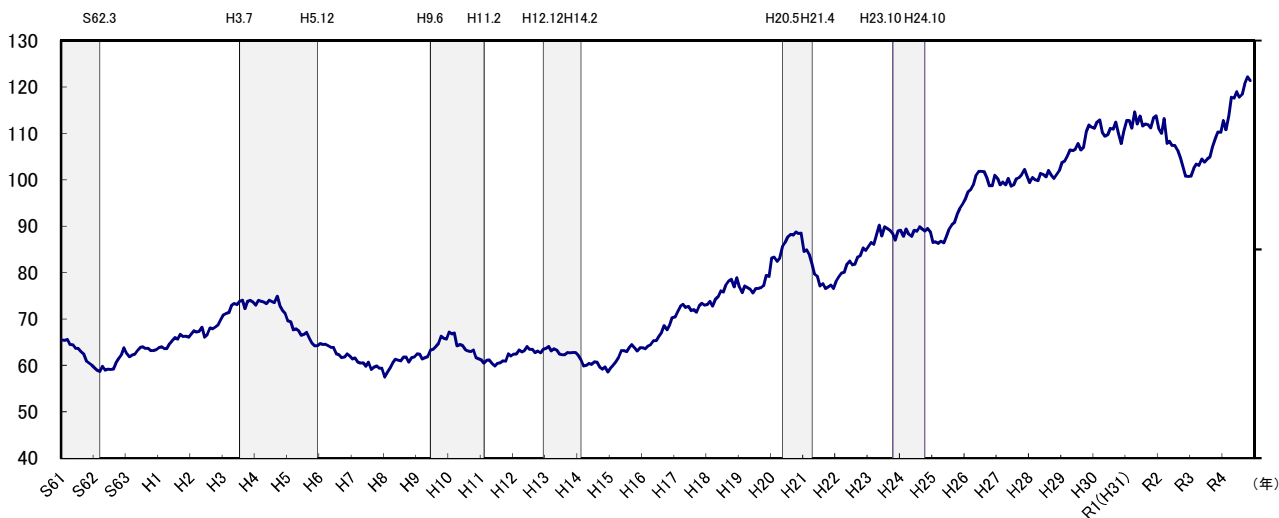
(1) 先行指数 Leading Index (平成27年=100)



(2) 一致指数 Coincident Index (平成27年=100)



(3) 遅行指数 Lagging Index (平成27年=100)



(注) シャドー部分は景気後退期を示す。

5 CI(コンポジット・インデックス)時系列表
Composite Indexes

(1) 先行指数 Leading Index

(平成27年=100)

| 年 | 月 | 1月 | 2月 | 3月 | 4月 | 5月 | 6月 | 7月 | 8月 | 9月 | 10月 | 11月 | 12月 | |
|---------|---|------|-------|-------|-------|-------|-------|-------|-------|-------|-------|-------|-------|-------|
| H7 | / | 1995 | 56.2 | 56.4 | 55.7 | 57.6 | 55.8 | 55.4 | 55.2 | 57.9 | 57.2 | 58.9 | 57.5 | 60.4 |
| 8 | / | 1996 | 59.5 | 61.3 | 58.2 | 61.7 | 63.5 | 62.8 | 67.5 | 62.6 | 59.3 | 61.7 | 65.2 | 61.5 |
| 9 | / | 1997 | 62.6 | 64.1 | 61.6 | 59.3 | 61.9 | 61.1 | 60.6 | 60.3 | 59.8 | 60.1 | 58.1 | 55.5 |
| 10 | / | 1998 | 52.7 | 53.6 | 53.3 | 51.4 | 49.9 | 48.2 | 47.6 | 47.7 | 47.5 | 47.4 | 49.1 | 48.4 |
| 11 | / | 1999 | 49.6 | 49.4 | 49.8 | 50.2 | 49.3 | 50.5 | 52.1 | 51.4 | 51.9 | 54.9 | 53.2 | 51.4 |
| 12 | / | 2000 | 53.1 | 51.8 | 52.0 | 53.3 | 52.0 | 52.6 | 50.6 | 50.2 | 50.5 | 49.3 | 51.0 | 52.0 |
| 13 | / | 2001 | 50.3 | 51.2 | 49.3 | 47.2 | 48.7 | 49.2 | 51.1 | 50.0 | 51.2 | 52.3 | 47.3 | 48.1 |
| 14 | / | 2002 | 48.2 | 50.4 | 51.6 | 54.4 | 57.1 | 57.9 | 56.4 | 55.7 | 56.0 | 54.7 | 57.2 | 54.5 |
| 15 | / | 2003 | 55.1 | 57.6 | 56.3 | 53.9 | 56.1 | 55.6 | 58.4 | 58.8 | 60.8 | 62.7 | 60.3 | 65.0 |
| 16 | / | 2004 | 62.1 | 64.0 | 66.3 | 64.4 | 65.1 | 66.8 | 65.8 | 62.4 | 61.8 | 63.9 | 64.9 | 65.0 |
| 17 | / | 2005 | 67.6 | 62.0 | 65.6 | 67.0 | 66.6 | 66.7 | 63.2 | 63.3 | 64.1 | 67.0 | 66.2 | 63.0 |
| 18 | / | 2006 | 68.8 | 70.9 | 66.0 | 68.5 | 66.6 | 71.4 | 71.4 | 73.3 | 66.0 | 66.6 | 69.0 | 68.6 |
| 19 | / | 2007 | 70.9 | 69.4 | 71.7 | 69.1 | 72.5 | 69.4 | 70.4 | 68.3 | 71.6 | 71.0 | 69.5 | 72.4 |
| 20 | / | 2008 | 69.3 | 70.9 | 68.2 | 71.7 | 69.4 | 70.6 | 68.2 | 67.1 | 66.0 | 63.3 | 58.6 | 59.8 |
| 21 | / | 2009 | 53.8 | 52.7 | 53.1 | 54.8 | 55.8 | 56.6 | 58.9 | 59.6 | 63.7 | 64.1 | 64.2 | 62.3 |
| 22 | / | 2010 | 63.3 | 63.8 | 68.4 | 66.6 | 67.6 | 69.0 | 70.3 | 69.1 | 66.7 | 68.4 | 70.0 | 70.4 |
| 23 | / | 2011 | 70.1 | 72.8 | 72.1 | 68.6 | 67.6 | 68.4 | 66.9 | 74.1 | 72.5 | 74.5 | 71.5 | 69.2 |
| 24 | / | 2012 | 71.4 | 72.2 | 75.3 | 72.2 | 75.6 | 77.7 | 76.0 | 73.6 | 72.2 | 71.5 | 76.4 | 78.8 |
| 25 | / | 2013 | 79.3 | 81.5 | 80.6 | 88.0 | 87.3 | 86.3 | 87.1 | 90.7 | 98.0 | 95.4 | 98.6 | 98.8 |
| 26 | / | 2014 | 106.6 | 99.8 | 92.7 | 94.4 | 94.4 | 98.7 | 96.4 | 93.1 | 91.6 | 96.3 | 93.4 | 99.3 |
| 27 | / | 2015 | 96.1 | 99.2 | 100.0 | 95.5 | 102.7 | 101.6 | 101.2 | 97.8 | 106.3 | 100.4 | 99.8 | 99.5 |
| 28 | / | 2016 | 96.5 | 94.4 | 95.3 | 92.0 | 93.9 | 94.7 | 96.7 | 103.5 | 95.5 | 99.8 | 106.8 | 102.9 |
| 29 | / | 2017 | 101.6 | 103.1 | 101.7 | 103.8 | 105.1 | 100.9 | 99.1 | 97.5 | 100.9 | 106.4 | 97.1 | 97.7 |
| 30 | / | 2018 | 99.1 | 95.4 | 99.3 | 98.0 | 97.5 | 102.7 | 95.8 | 101.0 | 97.8 | 104.6 | 103.3 | 100.5 |
| R1(H31) | / | 2019 | 102.6 | 102.7 | 95.9 | 98.9 | 94.7 | 94.7 | 93.8 | 94.9 | 96.2 | 89.7 | 87.8 | 89.6 |
| 2 | / | 2020 | 80.2 | 84.8 | 78.7 | 70.6 | 66.7 | 71.7 | 79.3 | 82.5 | 77.1 | 83.6 | 84.9 | 85.4 |
| 3 | / | 2021 | 91.2 | 87.7 | 87.1 | 93.1 | 90.3 | 90.2 | 84.7 | 85.5 | 87.3 | 88.4 | 93.5 | 94.8 |
| 4 | / | 2022 | 94.6 | 92.1 | 94.6 | 97.6 | 96.5 | 107.2 | 108.6 | 101.2 | 99.1 | 105.0 | 105.1 | |

(2) 一致指数 Coincident Index

(平成27年=100)

| 年 | 月 | 1月 | 2月 | 3月 | 4月 | 5月 | 6月 | 7月 | 8月 | 9月 | 10月 | 11月 | 12月 | |
|---------|---|------|-------|-------|-------|-------|-------|-------|-------|-------|-------|-------|-------|-------|
| H7 | / | 1995 | 38.4 | 37.4 | 38.2 | 37.7 | 38.1 | 37.9 | 38.1 | 38.7 | 39.1 | 39.9 | 39.7 | 41.4 |
| 8 | / | 1996 | 41.7 | 42.5 | 42.6 | 43.3 | 44.0 | 44.8 | 45.8 | 45.2 | 44.7 | 45.3 | 45.6 | 46.2 |
| 9 | / | 1997 | 46.7 | 48.2 | 48.7 | 49.8 | 49.5 | 50.4 | 48.8 | 49.2 | 50.0 | 49.3 | 49.7 | 48.1 |
| 10 | / | 1998 | 46.3 | 45.1 | 44.7 | 42.6 | 40.9 | 40.4 | 40.8 | 40.5 | 40.5 | 39.4 | 39.5 | 39.9 |
| 11 | / | 1999 | 38.9 | 38.2 | 39.2 | 38.6 | 39.3 | 38.6 | 39.4 | 39.8 | 39.9 | 40.9 | 42.3 | 41.9 |
| 12 | / | 2000 | 42.6 | 42.8 | 43.7 | 44.2 | 45.1 | 45.7 | 45.1 | 45.4 | 45.2 | 45.6 | 46.0 | 46.5 |
| 13 | / | 2001 | 47.5 | 47.6 | 46.6 | 46.0 | 44.8 | 44.1 | 44.4 | 44.2 | 44.5 | 43.7 | 41.3 | 41.2 |
| 14 | / | 2002 | 42.2 | 42.8 | 42.8 | 44.8 | 45.1 | 46.5 | 47.9 | 48.1 | 47.8 | 48.8 | 49.2 | 50.0 |
| 15 | / | 2003 | 50.6 | 52.2 | 52.9 | 53.5 | 53.6 | 54.1 | 56.9 | 59.9 | 60.8 | 62.8 | 64.4 | 65.9 |
| 16 | / | 2004 | 66.3 | 69.0 | 69.3 | 69.2 | 71.3 | 71.6 | 72.3 | 69.0 | 66.9 | 69.9 | 71.0 | 71.3 |
| 17 | / | 2005 | 72.5 | 72.7 | 73.6 | 75.0 | 74.4 | 75.3 | 75.1 | 74.7 | 73.7 | 76.2 | 77.2 | 77.5 |
| 18 | / | 2006 | 77.4 | 76.9 | 75.5 | 76.0 | 74.5 | 74.0 | 73.1 | 72.7 | 73.2 | 71.7 | 72.9 | 73.8 |
| 19 | / | 2007 | 74.0 | 74.5 | 73.8 | 75.9 | 74.7 | 74.4 | 73.2 | 72.3 | 72.0 | 71.5 | 72.1 | 72.3 |
| 20 | / | 2008 | 72.0 | 76.7 | 76.1 | 77.0 | 76.0 | 75.3 | 73.7 | 73.9 | 69.5 | 66.7 | 61.9 | 58.4 |
| 21 | / | 2009 | 53.6 | 50.7 | 49.4 | 47.3 | 48.5 | 49.3 | 51.4 | 52.1 | 54.4 | 56.0 | 57.5 | 57.6 |
| 22 | / | 2010 | 60.3 | 61.3 | 64.4 | 68.3 | 68.2 | 67.4 | 69.0 | 67.1 | 67.0 | 68.1 | 69.9 | 70.7 |
| 23 | / | 2011 | 72.8 | 72.9 | 72.9 | 73.3 | 73.8 | 74.7 | 73.7 | 75.9 | 76.1 | 76.1 | 75.3 | 74.6 |
| 24 | / | 2012 | 75.7 | 75.6 | 75.8 | 74.6 | 73.0 | 75.2 | 73.3 | 73.6 | 74.9 | 72.8 | 76.1 | 78.4 |
| 25 | / | 2013 | 78.1 | 81.9 | 81.6 | 81.0 | 81.6 | 84.6 | 86.1 | 87.2 | 90.5 | 94.5 | 95.6 | 95.6 |
| 26 | / | 2014 | 98.5 | 99.3 | 98.8 | 98.1 | 98.1 | 98.2 | 98.8 | 99.3 | 96.0 | 98.2 | 99.2 | 100.2 |
| 27 | / | 2015 | 96.7 | 97.9 | 95.3 | 97.9 | 101.2 | 100.8 | 102.1 | 102.2 | 104.6 | 101.0 | 100.0 | 100.3 |
| 28 | / | 2016 | 100.2 | 98.9 | 102.1 | 99.6 | 100.4 | 99.6 | 101.7 | 99.8 | 100.0 | 99.6 | 103.8 | 104.3 |
| 29 | / | 2017 | 104.2 | 104.7 | 104.8 | 106.5 | 105.5 | 107.5 | 105.2 | 103.5 | 104.4 | 103.8 | 103.9 | 103.6 |
| 30 | / | 2018 | 107.0 | 105.5 | 105.9 | 105.9 | 105.1 | 106.7 | 103.2 | 104.8 | 106.8 | 108.2 | 107.6 | 107.0 |
| R1(H31) | / | 2019 | 106.9 | 105.6 | 100.5 | 101.5 | 99.3 | 99.1 | 98.5 | 98.4 | 99.2 | 92.2 | 92.2 | 90.3 |
| 2 | / | 2020 | 87.7 | 84.0 | 81.0 | 76.3 | 70.1 | 68.8 | 69.9 | 70.4 | 71.1 | 73.1 | 73.2 | 75.5 |
| 3 | / | 2021 | 77.1 | 78.6 | 81.2 | 82.1 | 85.5 | 85.0 | 85.9 | 85.7 | 86.2 | 85.3 | 90.7 | 90.0 |
| 4 | / | 2022 | 90.6 | 92.3 | 92.9 | 96.1 | 95.2 | 98.0 | 98.0 | 98.2 | 99.7 | 100.3 | 99.8 | |

(3) 遅行指数 Lagging Index

(平成27年=100)

| 年 | 月 | 1月 | 2月 | 3月 | 4月 | 5月 | 6月 | 7月 | 8月 | 9月 | 10月 | 11月 | 12月 | |
|---------|---|------|-------|-------|-------|-------|-------|-------|-------|-------|-------|-------|-------|-------|
| H7 | / | 1995 | 61.4 | 61.6 | 60.7 | 60.5 | 60.6 | 59.8 | 60.7 | 59.1 | 59.6 | 59.9 | 59.4 | 59.4 |
| 8 | / | 1996 | 57.5 | 58.5 | 59.5 | 60.6 | 61.3 | 61.1 | 61.0 | 61.8 | 61.8 | 60.7 | 61.7 | 61.8 |
| 9 | / | 1997 | 62.5 | 62.4 | 61.4 | 61.7 | 61.9 | 63.3 | 63.5 | 64.0 | 64.8 | 66.3 | 65.8 | 65.7 |
| 10 | / | 1998 | 67.2 | 66.8 | 67.0 | 64.2 | 64.5 | 64.3 | 63.4 | 63.1 | 63.0 | 63.3 | 61.7 | 61.4 |
| 11 | / | 1999 | 61.2 | 60.5 | 61.1 | 61.2 | 60.4 | 59.9 | 60.4 | 60.6 | 61.0 | 60.9 | 62.5 | 62.0 |
| 12 | / | 2000 | 62.4 | 62.4 | 63.3 | 62.9 | 63.2 | 64.1 | 63.5 | 63.5 | 62.8 | 63.1 | 62.7 | 63.5 |
| 13 | / | 2001 | 63.7 | 64.1 | 63.1 | 63.6 | 63.3 | 62.4 | 62.3 | 62.3 | 62.8 | 62.7 | 62.8 | 62.8 |
| 14 | / | 2002 | 62.2 | 61.2 | 59.9 | 60.0 | 60.4 | 60.2 | 60.8 | 60.7 | 59.6 | 59.2 | 59.7 | 58.6 |
| 15 | / | 2003 | 59.4 | 60.1 | 60.8 | 61.7 | 63.2 | 63.2 | 63.0 | 63.9 | 64.5 | 63.8 | 63.1 | 63.8 |
| 16 | / | 2004 | 63.8 | 63.6 | 64.2 | 64.5 | 65.3 | 65.3 | 66.2 | 67.1 | 68.6 | 67.7 | 68.8 | 70.3 |
| 17 | / | 2005 | 70.4 | 71.6 | 72.8 | 73.2 | 72.5 | 72.7 | 71.8 | 72.0 | 71.5 | 72.8 | 73.4 | 73.0 |
| 18 | / | 2006 | 73.1 | 73.8 | 72.8 | 74.2 | 74.8 | 76.1 | 75.8 | 77.3 | 78.2 | 78.6 | 76.9 | 78.9 |
| 19 | / | 2007 | 76.9 | 75.7 | 77.1 | 76.8 | 76.4 | 75.6 | 76.6 | 76.6 | 76.8 | 77.2 | 79.4 | 79.2 |
| 20 | / | 2008 | 83.1 | 83.3 | 82.4 | 83.1 | 85.7 | 86.5 | 87.7 | 88.2 | 88.1 | 88.8 | 88.4 | 88.5 |
| 21 | / | 2009 | 84.6 | 84.9 | 83.8 | 81.9 | 79.7 | 79.2 | 77.1 | 77.6 | 76.6 | 76.9 | 77.3 | 76.6 |
| 22 | / | 2010 | 78.2 | 79.1 | 79.9 | 80.1 | 81.8 | 82.5 | 81.7 | 81.8 | 83.4 | 83.7 | 85.3 | 84.8 |
| 23 | / | 2011 | 85.6 | 86.5 | 86.1 | 88.3 | 90.2 | 87.9 | 89.9 | 89.5 | 89.1 | 88.4 | 87.0 | 89.0 |
| 24 | / | 2012 | 89.1 | 87.8 | 89.4 | 88.3 | 87.8 | 89.1 | 88.9 | 89.9 | 89.4 | 89.0 | 89.5 | 88.8 |
| 25 | / | 2013 | 86.5 | 86.6 | 86.3 | 86.8 | 86.4 | 87.8 | 89.3 | 90.3 | 90.8 | 92.6 | 93.9 | 94.7 |
| 26 | / | 2014 | 95.9 | 97.3 | 97.9 | 98.9 | 100.9 | 101.8 | 101.8 | 101.7 | 100.5 | 98.7 | 98.7 | 101.0 |
| 27 | / | 2015 | 100.3 | 98.9 | 99.5 | 98.9 | 100.3 | 98.6 | 98.9 | 100.2 | 100.5 | 101.1 | 102.2 | 100.7 |
| 28 | / | 2016 | 99.4 | 100.5 | 100.0 | 99.8 | 101.4 | 101.2 | 100.6 | 102.0 | 101.0 | 100.3 | 101.1 | 102.0 |
| 29 | / | 2017 | 103.7 | 104.1 | 105.1 | 106.4 | 106.3 | 106.6 | 107.8 | 106.4 | 107.0 | 110.4 | 111.8 | 111.4 |
| 30 | / | 2018 | 111.1 | 112.4 | 112.9 | 110.2 | 109.4 | 109.7 | 111.1 | 110.9 | 112.4 | 110.1 | 107.8 | 110.5 |
| R1(H31) | / | 2019 | 112.8 | 112.8 | 111.1 | 114.6 | 112.0 | 113.7 | 111.6 | 112.0 | 111.9 | 111.2 | 113.4 | 113.8 |
| 2 | / | 2020 | 111.1 | 110.0 | 113.2 | 107.9 | 108.3 | 107.4 | 107.4 | 106.4 | 104.7 | 102.8 | 100.8 | 100.7 |
| 3 | / | 2021 | 100.8 | 102.5 | 103.4 | 103.1 | 104.5 | 103.8 | 104.5 | 104.9 | 107.1 | 108.9 | 110.3 | 110.2 |
| 4 | / | 2022 | 112.8 | 110.8 | 113.8 | 117.8 | 117.6 | 119.0 | 117.8 | 118.4 | 120.7 | 122.2 | 121.4 | |

(注)CIの算出期間は昭和61(1986)年1月分以降であり、平成4(1992)年以前の数値についてはホームページを参照して下さい。

6 個別系列の数値

| 系列名 年月 | | 先行系列 Leading Indicators | | | | | | | |
|--------------|--------|--|---|--|---|--|---|---|--------------------------------------|
| | | L1 入職率 (製造業) (%) (季調値) | L2 新規求人数 (除く学卒) (人) (季調値) | L3 生産財 生産指数 (H27年=100) (季調値) | L4 乗用車新車 登録台数 (台) (季調値) | L5 鉱工業 在庫率指数 (逆サイクル) (H27年=100) (季調値) | L6 新設住宅 着工床面積 (㎡) (季調値) | L7 企業倒産 件数 (逆サイクル) (件) (季調値) | L8 貸出残高 (%) (前年同月比) |
| R 2 (2020) | 6 ... | 0.68 | 8,719 | 82.7 | 4,322 | 129.8 | 43,369 | 5 | 3.8 |
| R 2 (2020) | 7 ... | 0.95 | 9,020 | 85.1 | 4,726 | 126.5 | 50,273 | 4 | 4.3 |
| R 2 (2020) | 8 ... | 0.74 | 8,777 | 94.0 | 4,808 | 114.2 | 47,233 | 5 | 4.5 |
| R 2 (2020) | 9 ... | 0.44 | 8,823 | 86.9 | 5,176 | 125.4 | 46,544 | 8 | 4.4 |
| R 2 (2020) | 10 ... | 0.51 | 9,233 | 87.6 | 5,543 | 113.6 | 31,232 | 3 | 4.9 |
| R 2 (2020) | 11 ... | 0.50 | 8,768 | 92.7 | 5,116 | 103.8 | 43,670 | 4 | 4.1 |
| R 2 (2020) | 12 ... | 0.52 | 8,886 | 97.8 | 4,798 | 111.1 | 56,544 | 5 | 4.0 |
| R 3 (2021) | 1 ... | 0.97 | 9,130 | 96.8 | 4,988 | 98.4 | 48,142 | 6 | 4.6 |
| R 3 (2021) | 2 ... | 0.63 | 9,079 | 93.9 | 4,715 | 103.4 | 64,314 | 4 | 4.4 |
| R 3 (2021) | 3 ... | 0.60 | 9,293 | 98.7 | 4,746 | 94.1 | 55,123 | 12 | 2.4 |
| R 3 (2021) | 4 ... | 0.70 | 9,260 | 99.4 | 5,001 | 93.8 | 59,519 | 3 | 2.6 |
| R 3 (2021) | 5 ... | 0.65 | 9,565 | 101.1 | 4,555 | 95.5 | 60,774 | 2 | 0.5 |
| R 3 (2021) | 6 ... | 0.91 | 9,563 | 99.7 | 4,303 | 98.1 | 65,202 | 1 | -0.3 |
| R 3 (2021) | 7 ... | 0.66 | 9,566 | 99.9 | 4,424 | 104.1 | 52,822 | 6 | -0.4 |
| R 3 (2021) | 8 ... | 0.60 | 9,555 | 101.2 | 4,470 | 99.8 | 50,393 | 6 | -1.1 |
| R 3 (2021) | 9 ... | 0.67 | 9,579 | 104.0 | 3,192 | 101.5 | 55,614 | 2 | -1.1 |
| R 3 (2021) | 10 ... | 0.72 | 9,696 | 102.8 | 3,603 | 104.1 | 57,544 | 4 | -1.3 |
| R 3 (2021) | 11 ... | 0.67 | 10,394 | 100.6 | 4,134 | 104.3 | 64,899 | 4 | -1.0 |
| R 3 (2021) | 12 ... | 0.78 | 9,911 | 100.2 | 4,436 | 103.9 | 59,743 | 4 | -0.7 |
| R 4 (2022) | 1 ... | 0.99 | 9,939 | 101.1 | 4,265 | 110.6 | 43,403 | 1 | -1.2 |
| R 4 (2022) | 2 ... | 1.03 | 10,636 | 95.3 | 3,672 | 106.7 | 44,193 | 1 | -1.3 |
| R 4 (2022) | 3 ... | 1.00 | 10,528 | 99.1 | 4,078 | 114.9 | 42,430 | 5 | 1.0 |
| R 4 (2022) | 4 ... | 0.85 | 11,282 | 99.6 | 4,145 | 109.2 | 43,584 | 5 | 0.4 |
| R 4 (2022) | 5 ... | 0.87 | 10,564 | 104.3 | 3,511 | 117.1 | 58,339 | 4 | 0.9 |
| R 4 (2022) | 6 ... | 0.96 | 10,927 | 107.9 | 3,860 | 112.0 | 45,121 | 1 | 1.7 |
| R 4 (2022) | 7 ... | 1.09 | 11,150 | 104.1 | 4,013 | 102.2 | 48,319 | 3 | 2.0 |
| R 4 (2022) | 8 ... | 0.72 | 10,356 | 96.1 | 3,886 | 107.5 | 52,685 | 2 | 2.7 |
| R 4 (2022) | 9 ... | 0.89 | 10,877 | 90.5 | 4,129 | 112.8 | 53,197 | 7 | 3.2 |
| R 4 (2022) | 10 ... | 1.07 | 10,615 | 88.4 | 4,848 | 110.7 | 57,471 | 4 | 3.6 |
| R 4 (2022) | 11 ... | 1.01 | 10,474 | 87.7 | 4,619 | 111.0 | 60,662 | 2 | 3.9 |

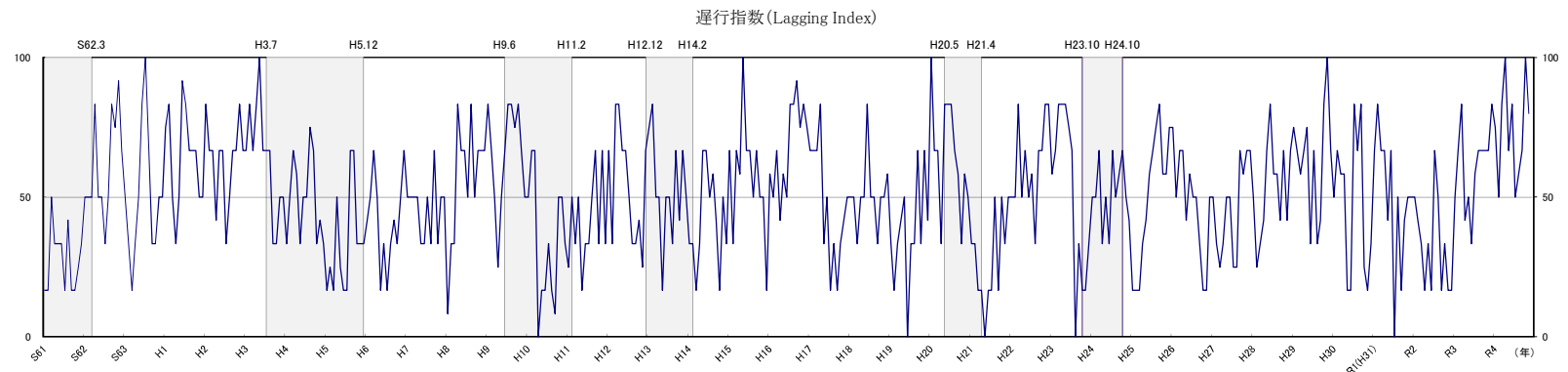
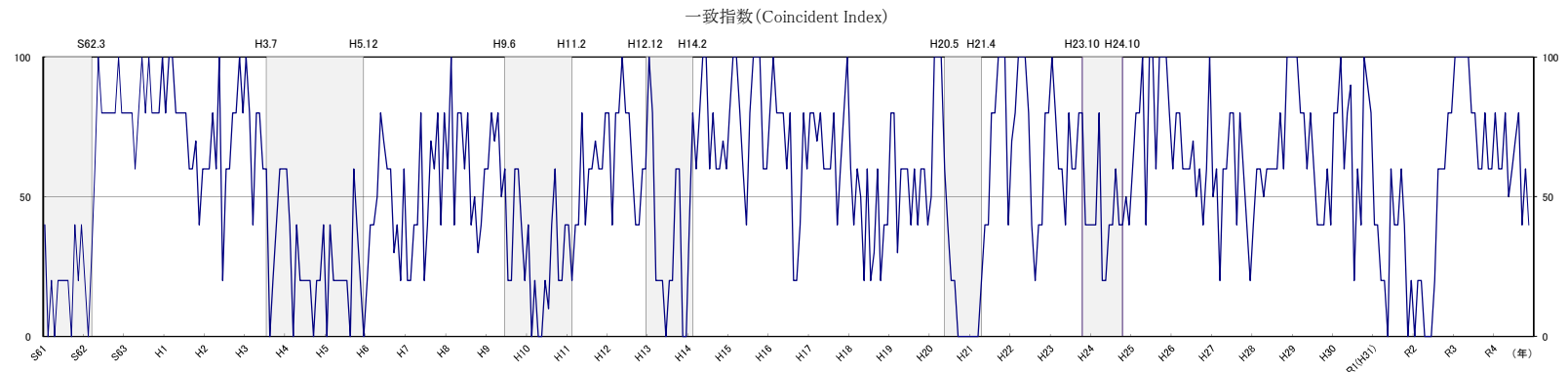
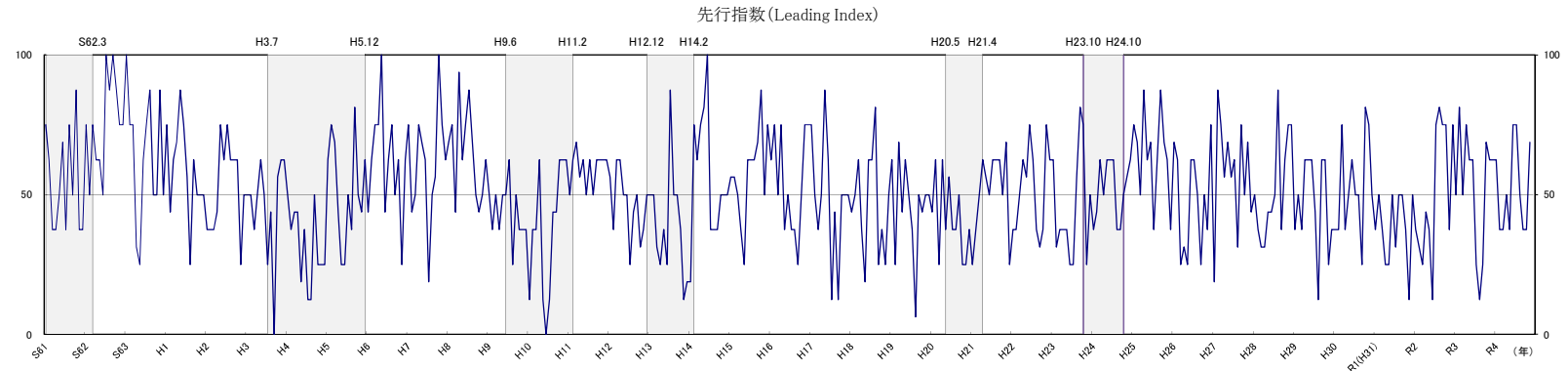
| 一致系列 Coincident Indicators | | | | | | |
|----------------------------|--------|------------------------------|------------------------------------|------------------------|---------------------|----------------|
| 年 月 | 系列名 | C1 所定外労働 時間指数 (製造業) | C2 雇 用 保 険 受給者実人員 (逆サイクル) | C3 有効求人倍率 (除く学卒) | C4 鉱 工 業 生産指数 | C5 輸入通関実績 |
| | | (R2年=100) (季調値) | (人) (季調値) | (倍) (季調値) | (H27年=100) (季調値) | (百万円) (季調値) |
| R 2 (2020) | 6 ... | 83.5 | 4,514 | 1.20 | 84.3 | 63,424 |
| R 2 (2020) | 7 ... | 90.3 | 4,711 | 1.21 | 87.0 | 67,417 |
| R 2 (2020) | 8 ... | 95.8 | 4,853 | 1.19 | 93.3 | 65,214 |
| R 2 (2020) | 9 ... | 103.3 | 4,842 | 1.22 | 93.7 | 50,048 |
| R 2 (2020) | 10 ... | 104.7 | 4,818 | 1.23 | 94.1 | 67,178 |
| R 2 (2020) | 11 ... | 107.3 | 4,734 | 1.21 | 95.5 | 63,650 |
| R 2 (2020) | 12 ... | 107.9 | 4,631 | 1.21 | 100.8 | 71,488 |
| R 3 (2021) | 1 ... | 107.3 | 4,669 | 1.25 | 97.2 | 89,735 |
| R 3 (2021) | 2 ... | 109.1 | 4,610 | 1.28 | 96.7 | 88,350 |
| R 3 (2021) | 3 ... | 115.1 | 4,607 | 1.29 | 102.5 | 90,722 |
| R 3 (2021) | 4 ... | 118.4 | 4,615 | 1.28 | 102.6 | 104,393 |
| R 3 (2021) | 5 ... | 117.7 | 4,074 | 1.32 | 103.7 | 105,008 |
| R 3 (2021) | 6 ... | 119.6 | 4,219 | 1.34 | 100.5 | 109,771 |
| R 3 (2021) | 7 ... | 121.2 | 4,175 | 1.35 | 98.4 | 116,579 |
| R 3 (2021) | 8 ... | 119.5 | 4,155 | 1.35 | 96.7 | 121,949 |
| R 3 (2021) | 9 ... | 114.6 | 4,143 | 1.36 | 98.5 | 128,780 |
| R 3 (2021) | 10 ... | 107.3 | 4,155 | 1.37 | 98.6 | 125,026 |
| R 3 (2021) | 11 ... | 117.6 | 4,241 | 1.41 | 110.8 | 147,397 |
| R 3 (2021) | 12 ... | 126.9 | 4,254 | 1.42 | 103.9 | 128,757 |
| R 4 (2022) | 1 ... | 122.5 | 4,259 | 1.44 | 104.4 | 136,649 |
| R 4 (2022) | 2 ... | 119.9 | 4,121 | 1.47 | 104.2 | 130,109 |
| R 4 (2022) | 3 ... | 117.4 | 3,963 | 1.49 | 98.6 | 134,393 |
| R 4 (2022) | 4 ... | 117.7 | 4,097 | 1.53 | 106.6 | 152,100 |
| R 4 (2022) | 5 ... | 113.0 | 3,911 | 1.47 | 97.3 | 204,091 |
| R 4 (2022) | 6 ... | 120.1 | 4,042 | 1.48 | 115.4 | 216,308 |
| R 4 (2022) | 7 ... | 132.3 | 4,222 | 1.53 | 109.8 | 190,578 |
| R 4 (2022) | 8 ... | 125.1 | 4,327 | 1.56 | 106.4 | 239,243 |
| R 4 (2022) | 9 ... | 127.9 | 4,064 | 1.63 | 100.5 | 202,832 |
| R 4 (2022) | 10 ... | 131.3 | 3,986 | 1.58 | 102.5 | 226,650 |
| R 4 (2022) | 11 ... | 123.7 | 3,856 | 1.60 | 98.1 | 217,200 |

| 遅行系列 Lagging Indicators | | | | | | | |
|-------------------------|--------|------------------------|---------------------------------|---------------------|---|---------------------|---------------------|
| 年月 | 系列名 | Lg1 常用雇用指数 (製造業) | Lg2 賃金指数 (所定内給与) (製造業) | Lg3 消費者物価 指 数 | Lg4 家計消費 支 出 (勤労者世帯) (実 質) (円) | Lg5 鉱工業 在庫指数 | Lg6 営業倉庫 保管残高 |
| | | (%) (前年同月比) | (%) (前年同月比) | (%) (前年同月比) | (円) (季調値) | (H27年=100) (季調値) | (千トン) (季調値) |
| R 2 (2020) | 6 ... | -2.2 | -2.0 | 0.3 | 363,126 | 105.1 | 219 |
| R 2 (2020) | 7 ... | -2.2 | -1.5 | 0.6 | 347,890 | 104.5 | 220 |
| R 2 (2020) | 8 ... | -2.0 | -1.1 | 0.6 | 360,308 | 102.3 | 209 |
| R 2 (2020) | 9 ... | -1.8 | -2.1 | 0.2 | 305,696 | 102.2 | 210 |
| R 2 (2020) | 10 ... | -1.8 | -0.5 | -0.5 | 321,547 | 98.4 | 186 |
| R 2 (2020) | 11 ... | -1.9 | -1.4 | -0.6 | 311,860 | 94.5 | 182 |
| R 2 (2020) | 12 ... | -2.3 | -0.5 | -0.8 | 292,527 | 101.9 | 174 |
| R 3 (2021) | 1 ... | -1.0 | 0.5 | -0.6 | 327,526 | 93.7 | 162 |
| R 3 (2021) | 2 ... | -1.0 | 0.7 | -0.2 | 313,763 | 94.4 | 173 |
| R 3 (2021) | 3 ... | -1.0 | 0.3 | 0.0 | 352,179 | 92.9 | 178 |
| R 3 (2021) | 4 ... | -1.5 | 2.1 | -0.6 | 285,255 | 91.4 | 200 |
| R 3 (2021) | 5 ... | -1.8 | 2.8 | -0.5 | 319,737 | 92.8 | 202 |
| R 3 (2021) | 6 ... | -1.3 | 1.4 | -0.1 | 286,457 | 92.8 | 194 |
| R 3 (2021) | 7 ... | -1.5 | 0.9 | 0.2 | 293,850 | 95.6 | 192 |
| R 3 (2021) | 8 ... | -1.7 | 0.7 | 0.0 | 284,209 | 93.4 | 212 |
| R 3 (2021) | 9 ... | -1.8 | 0.7 | 0.7 | 308,214 | 95.9 | 216 |
| R 3 (2021) | 10 ... | -1.6 | 0.2 | 0.6 | 345,115 | 97.3 | 226 |
| R 3 (2021) | 11 ... | -1.8 | 0.6 | 1.3 | 319,291 | 102.6 | 223 |
| R 3 (2021) | 12 ... | -1.7 | 0.8 | 1.1 | 295,391 | 101.3 | 228 |
| R 4 (2022) | 1 ... | -0.6 | 3.0 | 1.0 | 301,072 | 102.6 | 226 |
| R 4 (2022) | 2 ... | -1.4 | 2.5 | 1.1 | 261,205 | 98.8 | 233 |
| R 4 (2022) | 3 ... | -0.1 | 2.8 | 1.2 | 365,585 | 103.4 | 220 |
| R 4 (2022) | 4 ... | 0.8 | 3.3 | 2.6 | 373,575 | 104.3 | 228 |
| R 4 (2022) | 5 ... | 0.9 | 2.2 | 2.6 | 357,665 | 106.4 | 227 |
| R 4 (2022) | 6 ... | 0.8 | 3.5 | 2.8 | 298,885 | 111.6 | 230 |
| R 4 (2022) | 7 ... | 1.2 | 2.2 | 2.9 | 329,109 | 105.6 | 223 |
| R 4 (2022) | 8 ... | 1.1 | 2.9 | 3.2 | 293,886 | 106.0 | 227 |
| R 4 (2022) | 9 ... | 1.3 | 4.1 | 3.2 | 364,576 | 106.1 | 227 |
| R 4 (2022) | 10 ... | 1.3 | 5.0 | 4.1 | 338,674 | 105.7 | 0 |
| R 4 (2022) | 11 ... | 1.7 | 3.9 | 3.9 | 363,395 | 101.9 | 0 |

7 (参考) DI(ディフュージョン・インデックス)変化方向表
 Direction of Change in 19 Components of Diffusion Indexes

| 系 列 名 | | 令和3年 | | | | | | | | | | | | | | |
|----------|----------------------|------|------|------|------|------|------|------|-------|------|------|------|------|------|-------|------|
| | | 令和4年 | | | | | | | | | | | | | | |
| | | 9 | 10 | 11 | 12 | 1 | 2 | 3 | 4 | 5 | 6 | 7 | 8 | 9 | 10 | 11 |
| 先行 系列 | 1 入職率 (製造業) | - | + | + | + | + | + | + | - | - | - | + | - | - | - | + |
| | 2 新規求人数 (除く学卒) | + | + | + | + | + | + | + | + | - | + | - | - | - | - | + |
| | 3 生産財生産指数 | + | + | - | - | - | - | - | - | + | + | + | - | - | - | - |
| | 4 乗用車新車登録台数 | - | - | - | + | + | - | - | - | - | - | - | + | + | + | + |
| | 5 鉱工業在庫率指数 (逆サイクル) | - | 0 | - | - | - | - | - | + | - | + | + | + | - | - | - |
| | 6 新設住宅着工床面積 | - | + | + | + | - | - | - | + | + | + | + | - | + | + | + |
| | 7 企業倒産件数 (逆サイクル) | - | + | + | - | + | + | - | - | - | + | + | + | - | - | 0 |
| | 8 貸出残高 (全国銀行、信用金庫) | - | - | + | + | + | - | + | + | + | + | + | + | + | + | + |
| | 拡張系列数 | 2.0 | 5.5 | 5.0 | 5.0 | 5.0 | 3.0 | 3.0 | 4.0 | 3.0 | 6.0 | 6.0 | 4.0 | 3.0 | 3.0 | 5.5 |
| 採用系列数 | 8 | 8 | 8 | 8 | 8 | 8 | 8 | 8 | 8 | 8 | 8 | 8 | 8 | 8 | 8 | |
| 先行指数 | | 25.0 | 68.8 | 62.5 | 62.5 | 62.5 | 37.5 | 37.5 | 50.0 | 37.5 | 75.0 | 75.0 | 50.0 | 37.5 | 37.5 | 68.8 |
| 一致 系列 | 1 所定外労働時間指数 (製造業) | - | - | - | + | + | + | - | - | - | + | + | + | + | - | - |
| | 2 雇用保険受給者実人員 (逆サイクル) | + | + | - | - | - | + | + | + | + | - | - | - | - | + | + |
| | 3 有効求人倍率 (除く学卒) | + | + | + | + | + | + | + | + | 0 | - | 0 | + | + | + | + |
| | 4 鉱工業生産指数 | - | + | + | + | + | - | - | + | - | + | + | + | - | - | - |
| | 5 輸入通関実績 | + | + | + | - | + | - | + | + | + | + | + | + | - | + | - |
| | 拡張系列数 | 3.0 | 4.0 | 3.0 | 3.0 | 4.0 | 3.0 | 3.0 | 4.0 | 2.5 | 3.0 | 3.5 | 4.0 | 2.0 | 3.0 | 2.0 |
| 採用系列数 | 5 | 5 | 5 | 5 | 5 | 5 | 5 | 5 | 5 | 5 | 5 | 5 | 5 | 5 | 5 | |
| 一致指数 | | 60.0 | 80.0 | 60.0 | 60.0 | 80.0 | 60.0 | 60.0 | 80.0 | 50.0 | 60.0 | 70.0 | 80.0 | 40.0 | 60.0 | 40.0 |
| 遅行 系列 | 1 常用雇用指数 (製造業) | - | - | - | + | + | + | + | + | + | + | + | + | + | + | + |
| | 2 賃金指数 (所定内給与、製造業) | - | - | - | + | + | + | + | + | - | + | - | + | + | + | + |
| | 3 消費者物価指数 (山口市) | + | + | + | + | + | - | + | + | + | + | + | + | + | + | + |
| | 4 家計消費支出 (勤労者世帯、実質) | + | + | + | - | - | - | + | + | + | - | - | - | + | + | + |
| | 5 鉱工業在庫指数 | + | + | + | + | + | - | + | + | + | + | + | - | - | + | - |
| | 6 営業倉庫保管残高 | + | + | + | + | 0 | + | - | + | - | + | - | 0 | - | - | - |
| | 拡張系列数 | 4.0 | 4.0 | 4.0 | 5.0 | 4.5 | 3.0 | 5.0 | 6.0 | 4.0 | 5.0 | 3.0 | 3.5 | 4.0 | 5.0 | 4.0 |
| 採用系列数 | 6 | 6 | 6 | 6 | 6 | 6 | 6 | 6 | 6 | 6 | 6 | 6 | 6 | 5 | 5 | |
| 遅行指数 | | 66.7 | 66.7 | 66.7 | 83.3 | 75.0 | 50.0 | 83.3 | 100.0 | 66.7 | 83.3 | 50.0 | 58.3 | 66.7 | 100.0 | 80.0 |

8 (参考)DI(ディフュージョン・インデックス)時系列グラフ



11 (参考) 累積DIグラフ(Cumulated Diffusion Indexes)

--- 先行指数 — 一致指数 — 遅行指数

